

QUESTION:

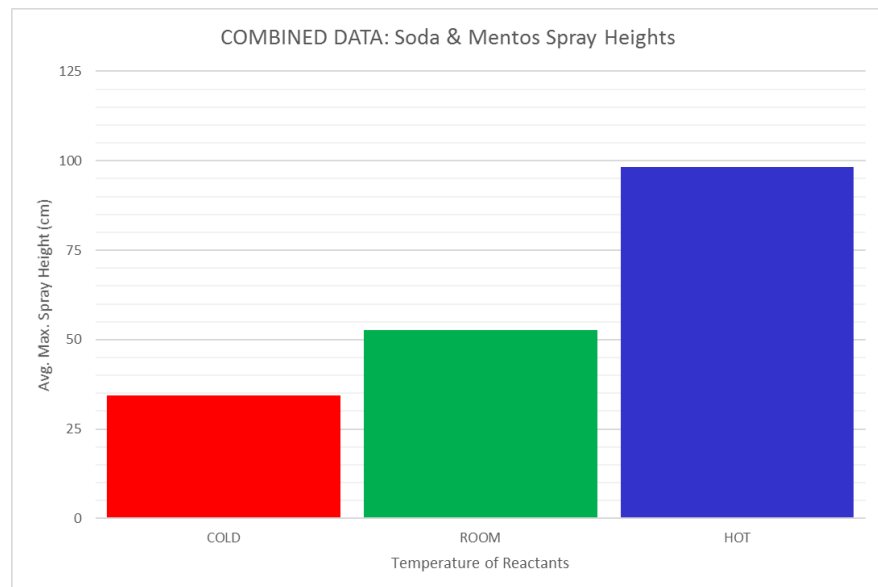
How does the temperature of the reactants affect the strength of the reaction between Diet Coke and Mentos?

CLAIM:

Warmer reactants cause a stronger reaction

EVIDENCE:

Warmer temperatures caused the spray height to increase. Higher spray indicates a stronger reaction.



JUSTIFICATION:

Ingredients in the soda and candy react to form carbon dioxide gas. Nucleation sites (craters) on the candy surface provide a place for CO_2 bubbles to form.

Increasing the temperature causes the molecules to move faster and collide more often, allowing the reactants to come into contact more, producing the CO_2 gas faster.

Name: _____ Pd: _____ Ast: A8